

Thank you for purchasing the Visit My Harbour live chart viewing system for £25 !

We sincerely hope that you enjoy viewing this priceless collection of nautical charts, painstakingly compiled by the UKHO/ British Admiralty from data gathered over many years. The detail is stunning, the range of charts comprehensive, the quality is superb.

Having purchased this system you are entitled to access these charts from any online computer for a period of one year, with a fair use policy of 1200 chart views.

Firstly to dispel a few myths, some may ask “why do we have to charge for access to these charts ?” The answer is simple enough... the charts are licensed and every time you view a chart, it has to be logged and paid for. Secondly, viewing these charts in the Zoomify Viewer at full-scale and resolution is megabyte intensive. A substantial amount of bandwidth is required and this costs. Thirdly, Keeping the charts up-to-date with the rolling renewal programme is expensive. Finally, geo-referencing the charts is a very time-consuming job, and thus expensive.

This user guide sets out to show you how to make best use of these charts, and also contains hints and tips that will be of general use while browsing.

There are over 400 individual full-sized charts within the home waters folios, for our purposes they are divided into eight regions. Some of the charts consist of a single sheet, while others consist of several smaller chartlets, consolidated into one large paper chart. We have broken down these charts into their smaller sections (to enable geo-referencing). Therefore looking at the chart list you will see there appears to be considerably more than 400 charts.

All charts have a suffix eg. -0 or -1 etc. Where information that would normally appear on one paper chart is broken into smaller chartlets (by the UKHO themselves) covering different areas, you will find these sub charts listed separately, c/w title and scale.

Tip 1: Rather than wasting your chart views looking at large scale harbour plans, you may well find the harbour in question is covered elsewhere on the website with free non zoomable charts. Looking at these free charts does not count in your totting up.

Tip 2: When viewing anything on the Internet using Internet Explorer, Firefox, or Google Chrome... pressing F 11 will give you a full screen view. This tip is particularly useful when viewing our free non-zoomable charts.

The charts that you have purchased are all viewable in a special full screen zoomify viewer. To activate the full-screen mode you need to click the end button on the right hand side:



Click end button for "Full Screen Mode"

The full-screen mode **does not** encompass geo-referencing, but has all the other features, including drag and pan. It is particularly useful for taking screenshots without distracting toolbars encroaching on the chart.

Tip 3: Remember at all times you can revert to a normal view by hitting the “esc” button, OR clicking on the full-screen button shown above.

The full-screen viewer has been tested with Internet Explorer and Firefox, there are issues with Google Chrome (for a workaround with Google Chrome keep reading).

Tip 4: Taking a screenshot. Size and drag the chart around to get the view you want showing on the screen. Press “prt sc” (print screen). This saves your current view to your clipboard.

Next open “Paint” or other image manipulation program, and paste in your screenshot, either by using the drop-down menu or pressing “ctrl” and “v” together. The image that was on your screen should appear.

Tip 5: To print your “landscape” image onto A4 paper, You can rotate the image by 90° using “Image” >“Flip/Rotate” in the top toolbar within “paint”. Now when you print your image it will fit itself more naturally to the A4 paper.

The above tip applies equally to the free non-zoomable chart images around the website. Use Tip 1 to get the full screen view, then Tips 4 and 5 as above. Screenshot images can be printed on card and laminated, making them particularly durable.

All 400+ home waters charts are viewable in the full-screen non-geo-referenced viewer.

The geo-referenced viewer:

Positions are displayed in the following format Degrees:Minutes:Decimal Minutes in precisely the same manner as they are displayed on the charts, and in most GPS sets.

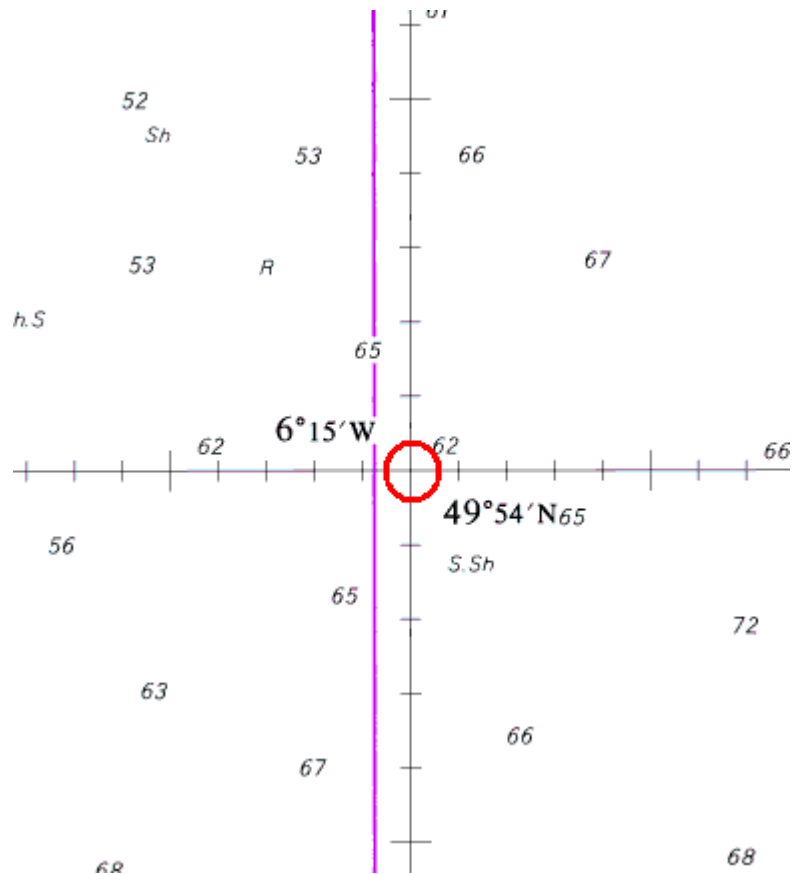
At present all charts within the South of England folio (folio 1), have been geo-referenced and are available to you as a free added bonus.

Unfortunately it is impossible to provide geo-referencing and a full-screen viewer at the same time, so you'll find with all the charts in this folio that you have a choice... either full-screen or geo-referenced.

The geo-referenced viewer is a fixed size object, showing the zoomable chart as usual but with a box in the top right-hand corner displaying the latitude and longitude of the cursor position. There are many possible reasons why the latitude and longitude displayed could become corrupted or inaccurate, therefore before using these for fixing waypoints etc. it is necessary to check the accuracy.

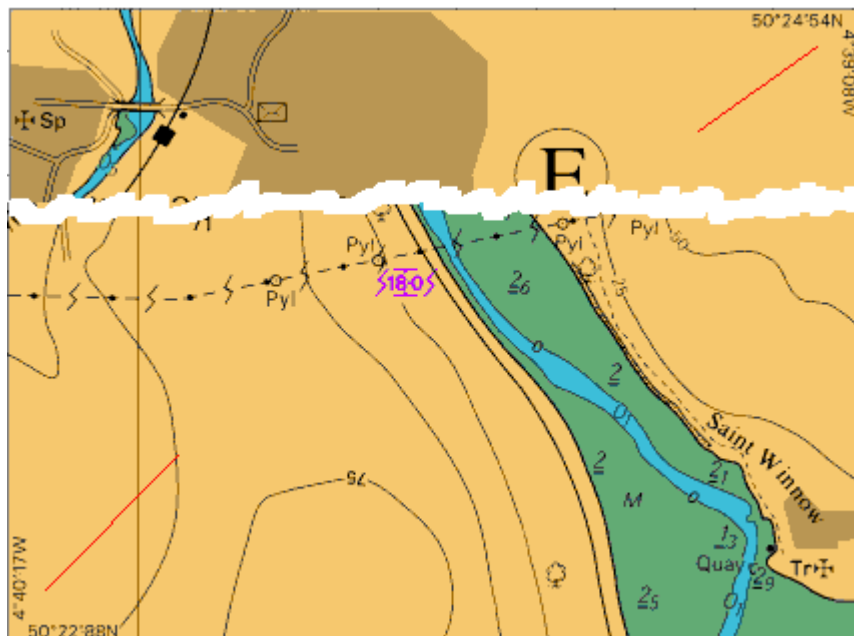
Testing the accuracy of the geo-referencing:

Depending on the scale of the chart there will normally be a point where the vertical and horizontal lines cross each other, and often on a smaller scale charts you will find the precise latitude and longitude of this point marked on the chart. It is then simply a matter of hovering the cursor over this point and comparing the reading on the chart and a reading in the lat/long box within the viewer. Below is an example:



Often you will find that in one part of the chart the Geo referencing will be absolutely spot-on, while in another part of the chart it will be fractionally out. This cannot be helped, the main thing is to make sure for yourself that the accuracy levels are suitable for your purposes.

On large-scale harbour plans there may not be a suitably labelled crosshair to test the accuracy. In these cases you will have to use the figures in the extreme top right corner and the extreme bottom left corner as seen below:



Test the readings of the Geo-referenced viewer using the cursor to get the position of the top edge, the bottom edge, the left edge, and the right edge. These readings can be compared with the printed figures on the chart.

Enlarging the geo-ref viewer to fill your screen:

Tip 6: It is possible using native Windows tools to enlarge the geo-referenced viewer to completely fill your screen. As mentioned before by pressing F11 you can get a full screen view from your browser. Having done this it is simply a matter of pressing the “ctrl” button on your keyboard, while using the scroll wheel on your mouse to enlarge or contract the viewable object.

This tip is useful for all kinds of websites if you want to get a better view of a small object on the page. With the geo-referenced viewer it expands the object, and once you are satisfied with it you can manoeuvre and manipulate the chart as before.

How to find your chart:

- 1. If you know the chart number, enter it in the search box and any charts/sub charts will be displayed.**
- 2. If you don't know the number, you can use the search facility to try and find it by using appropriate keywords that may be in the title.**
- 3. Download the complete chart list, organised into folios... you can get the chart numbers required from here.**

Finally, thank you for purchasing your chart viewing package. We hope this unique product will give you many hours of enjoyment. We remind you that all the images are British Crown Copyright and for your personal “not for navigation” use only.

Download chart lists separately.